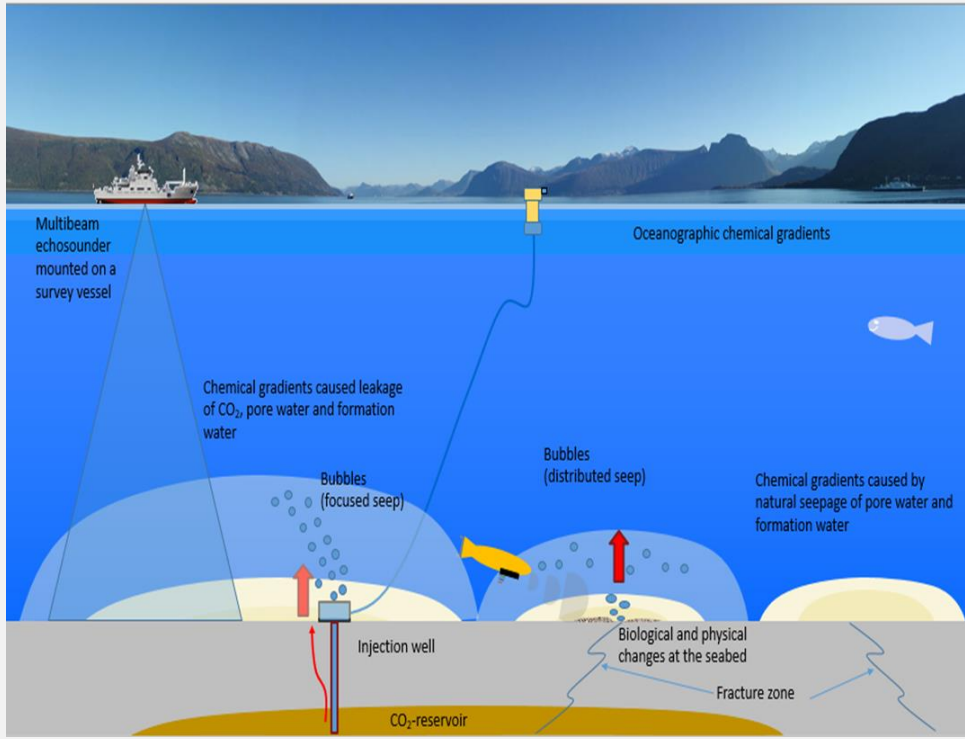




Marine Environmental Monitoring CLIMIT SUMMIT 2019

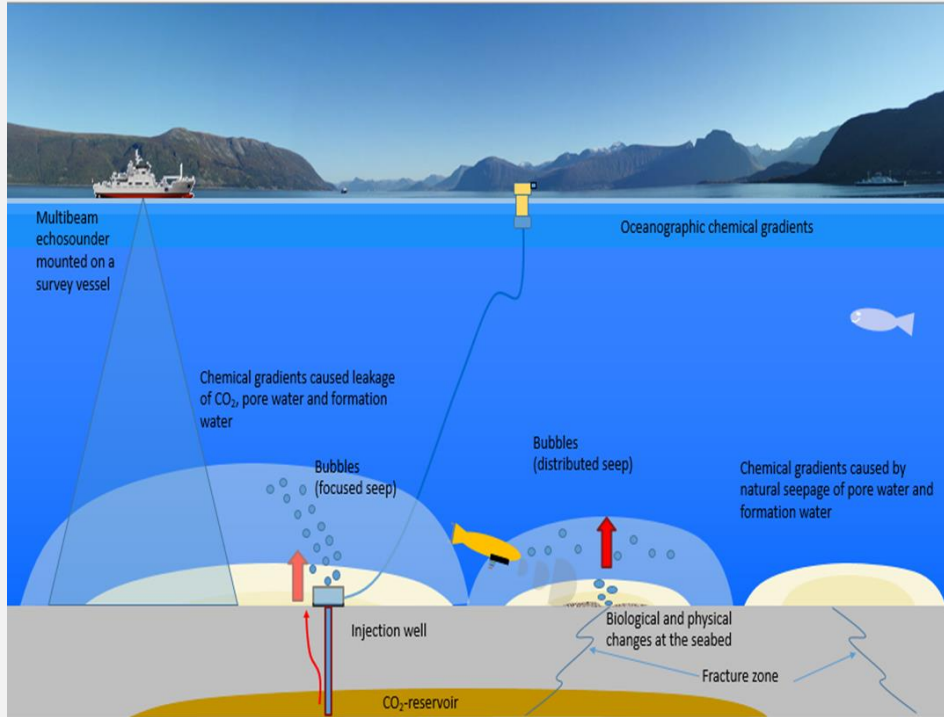
Short presentation by Ann Blomberg (aeb@ngi.no)

Environmental monitoring of geological carbon storage



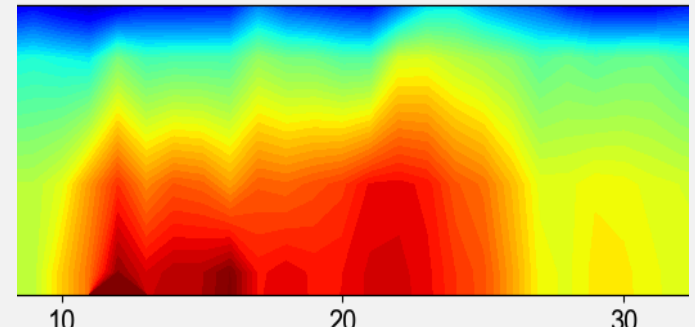
- Marine environmental monitoring covers the seabed and water column
- Necessary in order to
 - Verify that no injected CO₂ affects the marine environment
 - Detect and quantify leakage if it should occur
 - Comply with regulatory requirements

Challenges of environmental GCS monitoring

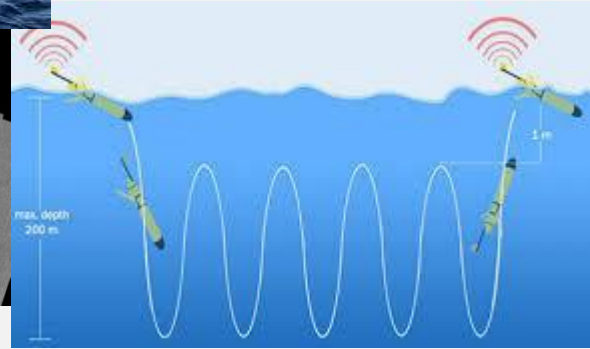
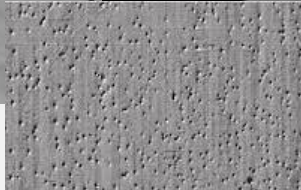
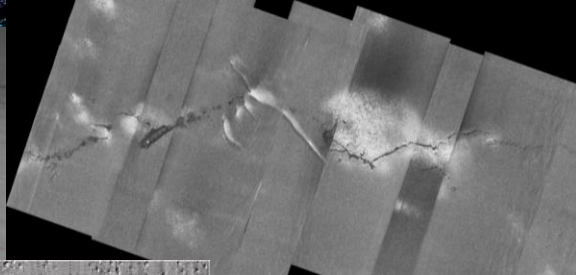
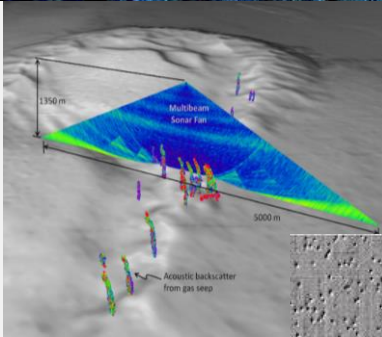
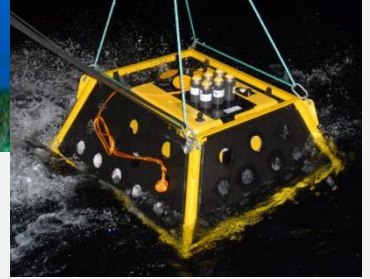
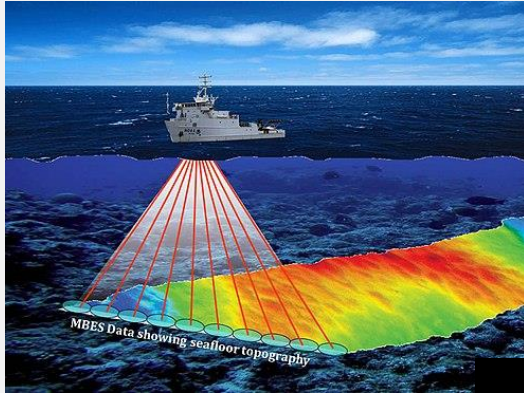


- Very large area: 1000's of km²
- Highly inhomogeneous medium with large natural variations
- *If a leak should occur, what will it look like?*

pCO₂, ppm

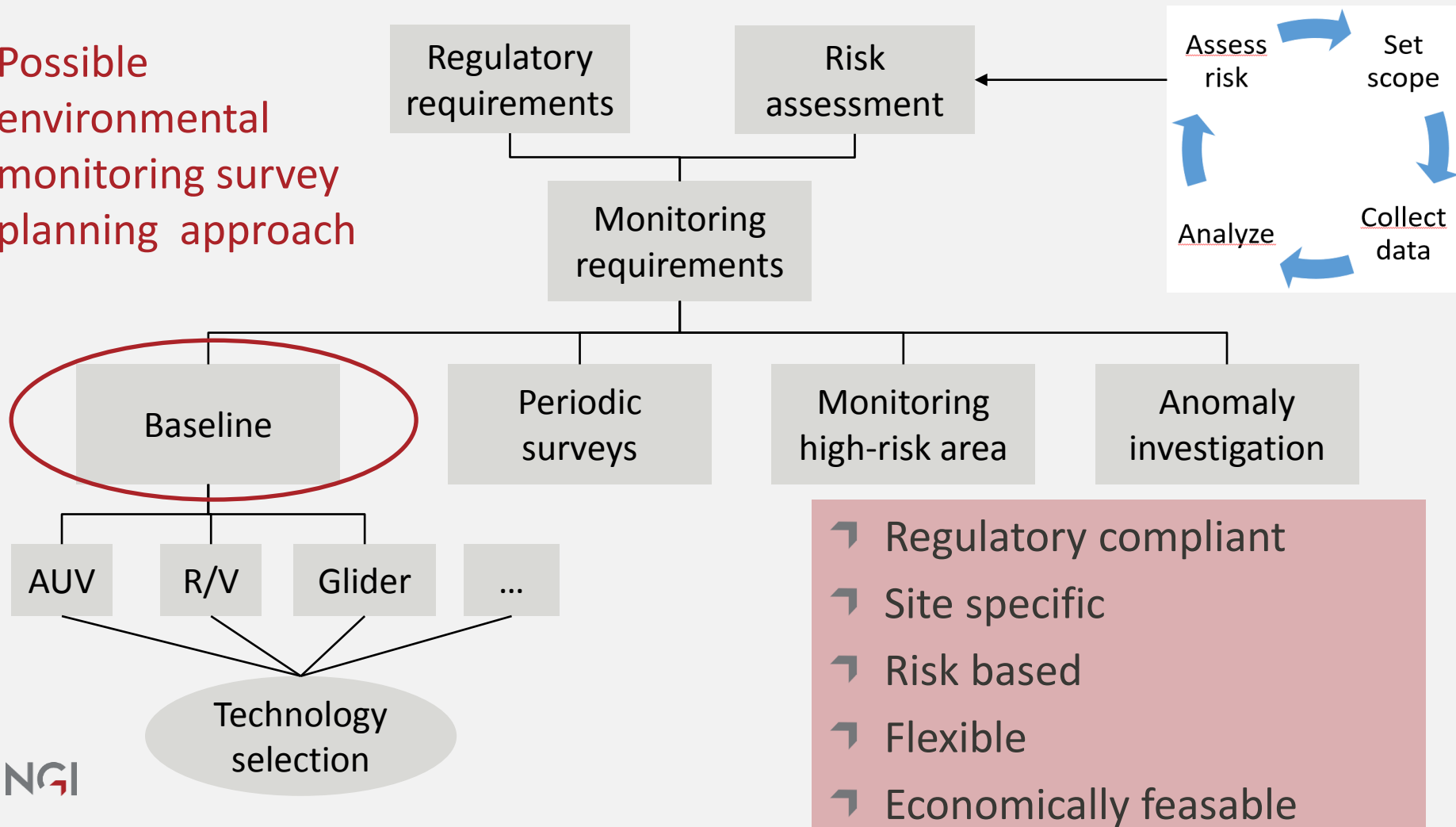


Efficient and robust monitoring requires well planned use of a range of technologies and platforms



Courtesy of noc.ac.uk

Possible environmental monitoring survey planning approach





#onsafeground

NORWEGIAN GEOTECHNICAL INSTITUTE
NGI.NO